

GRANTHAM  
OPERATIC  
SOCIETY

Registered Charity No. 512490



**VISUAL STORY FOR GRANTHAM OPERATIC SOCIETY'S  
PERFORMANCE OF 'INTO THE WOODS' AT  
GUILDHALL ARTS CENTRE, GRANTHAM**

---

**The show lasts for 2.5 to 3 hours including an approximately 20 minute  
break (which is called an interval).**



**Grantham Operatic Society are performing a show called 'Into The Woods' at the Guildhall Arts Centre in Grantham.**



**You may have to wait in a queue when you get to the theatre and it can be quite busy and noisy.**



**You may enter the theatre through the arched step entrance or round the side (to the right of building) for step free access.**

When you go inside the theatre you will see someone selling programmes. Programmes have information and pictures about the show and the actors. They will also be selling raffle tickets where you can win prizes after the performance.



You will then walk along this corridor or up the stairs depending on where your seats are in the theatre. This is called Front of House.



**Before you go to your seats you may wish to buy a drink or snack from Digby's Café. You will find this next to the side entrance.**



**There are toilets at the theatre on the ground floor. If you need to use the toilet, that's fine, just ask an usher to guide you. These are also signs to show you where the toilets are.**





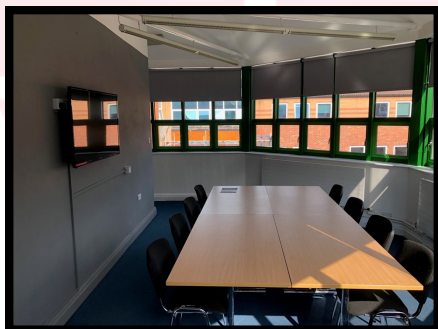
**It will then be time to take your seats. The inside of the theatre where the seats are is called the auditorium. It is big and there are lots of seats.**



**When you reach the auditorium, an usher will look at your tickets and tell you where your seats are. The numbers on your tickets tell you where we have to sit. It is not a choice.**

---

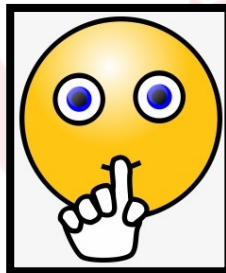
**When you get to your seats you can sit down and relax. There will be lots of other people sitting near you and it will be quite noisy.**



**If at any point the show gets too noisy for you and you need to take some time away from the performance that is fine. There will be signs showing you where our breakout room is. This will be in Studio 4. Normally it will look like the pictures above but we have moved the tables and filled the room with activities.**



When it is time for the show to start you will hear a voice asking everyone to turn off their mobile phones. This voice is coming through a speaker. The theatre will get darker and everyone will be quiet. You will need to be as quiet as you can during the show so that you can hear everything.



Seeing a show is like watching television, or a film, but the people in a show are on a stage and they are called actors.

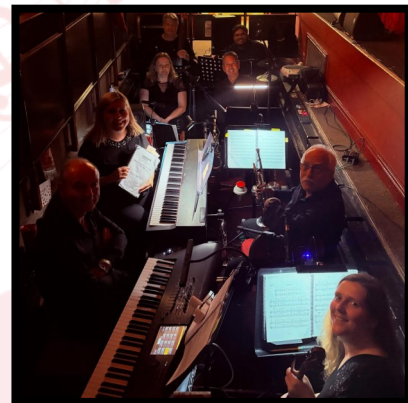
---

'Into The Woods' is a special kind of show called a musical. The actors will tell a story by talking, singing and dancing.



This is what the actors see when they look out into the auditorium from the stage.

**Before the show starts, some of the actors will come out on to the stage and introduce themselves. They are all friendly people and will explain about how they are ‘acting’ their roles.**



**There will also be live band playing the music. You may be able to see some of the band and their musical instruments as you enter the theatre.**

---

**When the show starts, you will hear some actors start to speak and sing. The band will also be playing.**

**You will have a lot of fun during the performance. There is lots of singing and dancing. Sometimes it might be loud but don't worry, nothing will hurt you. If the sounds are too loud you can put your hands over your ears, or wear your headphones (if you brought some with you).**



**After each song, some people will clap. Clapping is nice because it tells the actors you liked their song. If you want to clap, you can. You don't have to clap if you don't want to.**



**In the middle of the show, there is a break. This break is called an interval. The curtains will close here. During the interval you can use the toilet and have a drink or snack. You can also visit the breakout room if you wish.**



**After the interval, everyone will come back and sit down in their seats again. It will get darker and quieter again just like at the beginning of the show. The actors will come back on the stage and finish performing 'Into The Woods'.**

At the end of the show, all of the actors will come out on stage. This is called a curtain call. Many people will clap a lot so the actors know how much they liked the show. They may also stand up to show they liked the performance.



After the show is over, the curtains on the stage will close for the second time. You will leave the theatre. If you brought some raffle tickets, don't forget to check the prizes in case your number won.

**We hope you have a lovely time watching  
'Into The Woods'!  
Thank you for coming to watch  
Grantham Operatic Society.**